



Telephone: (028) 9046 1755 Web: www.lobillwc.co.uk
Email: sales@lobillwc.co.uk

Exclusive Distributor for Ireland

FRANKE



Intelligent. Efficient. Reliable.

For further details about our full product range, please visit www.dartvalley.co.uk or contact our sales team on +44(0)1803 529021

V1 23/09/2019

HEALTHCARE SOLUTIONS

Products for Hospitals, GP Practices, Health Clinics and Care Homes



HEALTHCARE

Specialising in water saving technology for commercial washrooms, Dart Valley Systems have been producing leading automatic washrooms for over 30 years. DVS are a market leader in the field of water saving products along with automatic washroom solutions for specialist applications, including, mental healthcare, healthcare, custodial, retail, leisure, educations, airports, public sector markets and more. DVS products have been used reliably in some of the most demanding environments for many years

Dart Valley Systems offer a comprehensive range of HTM & HBM compliant products designed with healthcare in mind. Selection of the correct products has been shown to increase hand washing compliance and reduce cross contamination. DVS have achieved extremely high levels of reliability and value for money. The DoH acknowledge that design principals to consider for new and existing healthcare buildings include hands-free operation of utilities; including sensor taps and movement sensors for toilet flushes, as well as smooth easy to clean surfaces. DVS believe that the ease of use also encourages handwashing thus increasing compliance.



DVS products are all produced to the highest standard and manufactured in the UK



DVS branded taps, WC flushing and urinal products are guaranteed for 5 years



DVS controls ensure a clean and fresh environment whilst offering substantial water savings



DVS have designed the No-Touch system to work with various controls, including the DVS Programmable sensor



We can design and manufacture bespoke solutions for our customers



Product is compatible with the DVS handheld programmer

CONTENTS

AQUARITHERM™ 2	EZ SPOUT™ RANGE 4	MEDI SPOUT™ RANGE 5	AQUARIUS™ CLINICAL TAP RANGE 6
SURGEONS SCRUB-UP TROUGH RANGE 7	FRANKE STAINLESS STEEL 8	PRE-PLUMBED PANELS 9	NO-TOUCH FLUSHVALVE & CISTERN KITS 10
SHOWERS 12	WM & DM SPOUTS 16	STAINLESS STEEL & ABS SHOWER HEADS 17	ANTI-MICROBIAL SHOWER HEAD 18
MEDI-SHOWER 19	CONTROL SYSTEMS 20	THERMAL DISINFECTION VALVE 22	AQUA A3000 OPEN WATER MANAGEMENT SYSTEM 23
HANDHELD PROGRAMMER 24	PROGRAMMABLE SENSORS 25	PRODUCT LIST 26	DVS NEPTUNE 29

ACCREDITATIONS



DVS AQUARITHERM™ TAPS

Designed with healthcare environments in mind, the AquariTherm™ range combines infection control features. It also offers simple isolation for quick and easy servicing and stylish aesthetics meeting the needs of healthcare professionals and technical support staff.

The patented isolation feature allows the tap to be removed for servicing or exchange without the need to isolate the water or remove any panels. This feature reduces any down time during servicing or disinfection, with easy to access filters these can be removed replaced or cleaned in a matter of seconds.

As well as unique servicing features, the AquariTherm™ tap is designed with no sharp corners allowing for easy cleaning.

The AquariTherm™ tap is available in either automatic or manual specification, making it ideal for a range of healthcare applications. The sensor controlled specification offers a no-touch solution, with an ergonomic integrated downward facing sensor, with adjustable range and automatic purge facility.

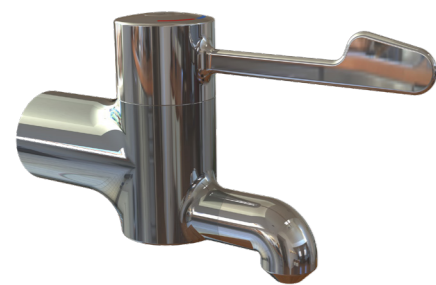
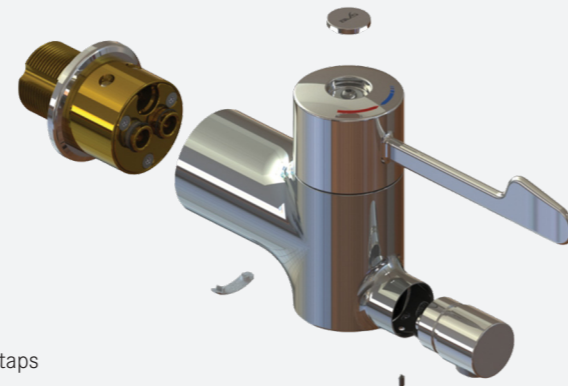
Both the manual and sensor controlled models include a mechanism to ensure that hot water is mixed before being delivered to the users' hands, ensuring there is no 'hot spike' effect for the user of the tap. Additionally the tap body stays cool during use, even with prolonged running of hot water.



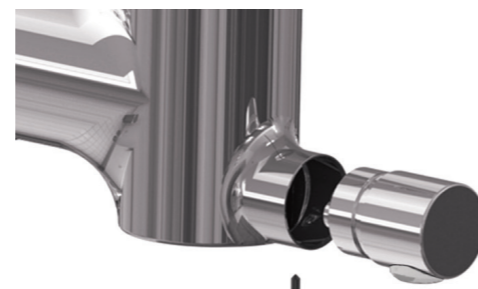
AQUARITHERM™ MANUAL

FEATURES_

- HTM64 compliant
- DZR brass tap body
- Ergonomic Easy-Clean surfaces
- Quick and easy servicing
- No hot surface area
- Easy to remove filters and serviceable valves
- Anti-Microbial ABS outlet with unrestricted flow rate
- Wall to Tap handle position extended further than existing healthcare taps



Aquaritherm - Open outlet version, features a non restricted open outlet with smooth internal bore



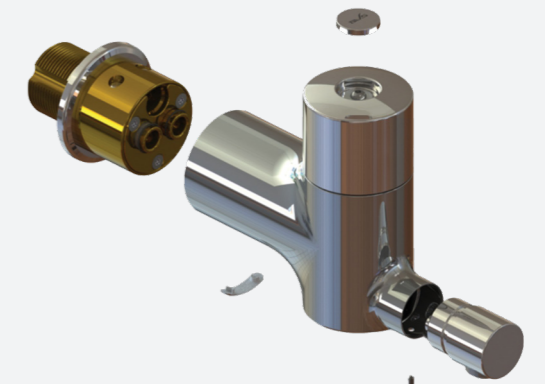
The manual and remote sensor taps feature a removable spout for servicing (above)

DVS AQUARITHERM™ TAPS

AQUARITHERM™ TAP

FEATURES_

- HTM64 compliant
- DZR brass tap body
- Ergonomic Easy-Clean surfaces
- Quick and easy servicing
- No-Touch operation via separate sensor
- No hot surface area
- Adjustable sensing range
- Easy to remove filters and serviceable valves
- Auto-Purge facility built in
- Reduced hot spikes
- Chlorination setting
- Record real-time data from the fully programmable sensor via handheld programmer (See page 26)
- Anti-Microbial ABS outlet with unrestricted flow rate



AQUARITHERM™ TAP WITH SEPARATE PROGRAMMABLE SENSOR

- No-touch operation
- Adjustable run time
- Anti-vandal mode on/off and adjustable time
- Automatic and time adjustable purge

SERVICE KITS

To maintain hygiene and the efficient running of the AquariTherm™ tap, there are 2 service kits available for both manual and automatic specifications:



KIT.1

- 2x Filter cartridges
- 2x Check valves (inserted)
- 1x Flow straightener (Unrestricted)

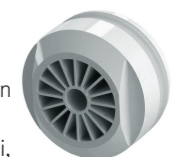


KIT.2

- 1x Thermostatic cartridge

ANTIMICROBIAL OUTLET_

Moulded using Biomaster; proven to help reduce harmful bacteria's common in healthcare environments, including; Pseudomonas, Legionella MRSA, E.Coli, Listeria, Salmonella and Campylobacter by up to 99.9%.



EZ SPOUT™ RANGE STAINLESS STEEL

EZ SPOUT™

The EZ Spout™ range has two options, uncontrolled outlets or a flow regulated outlet, both are manufactured using 316 stainless steel.

The spouts are mounted on a wall spigot also manufactured in 316 stainless steel, the outlets can be removed easily for sterilisation if and when required.

Water control is via an infrared sensor mounted directly under the spout for automatic operation or to one side to give wave operation both are no touch meaning a greatly reduced risk of cross contamination.

The sensor is fully programmable when used with the DVS hand held programmer allowing for various settings for different applications, the sensor is also bi-directional allowing for usage data to be viewed or downloaded if required.

REMOVABLE SPOUT

The removable EZ spout can be removed quickly and easily, to enable servicing, autoclaving and exchange with other DVS removable spouts, ensuring the station remains fully operational at all times.

This feature applies to all 4 variants of the EZ spout below.



EZ-HC 90° TAP SPOUT

- Angled at 90° degrees
- Quick and easy to remove for servicing
- Slim, minimalistic, modern appearance
- No outlet, smooth open bore



AT07-101

EZ-60 TAP SPOUT

- Angled at 60° degrees
- Quick and easy to remove for servicing
- Slim, minimalistic, modern appearance
- Standard 5 LPM outlet (other flow rates available)
- P-O-U filter compatible



AT07-103

EZ-HC 60° TAP SPOUT

- Angled at 60° degrees
- Quick and easy to remove for servicing
- Slim, minimalistic, modern appearance
- No outlet, smooth open bore



AT07-104

EZ-90 TAP SPOUT

- Angled at 90° degrees
- Quick and easy to remove for servicing
- Slim, minimalistic, modern appearance
- Standard 5 LPM outlet (other flow rates available)
- P-O-U filter compatible



AT07-102

Healthcare Solutions

MEDI SPOUT™ RANGE ANTI-MICROBIAL



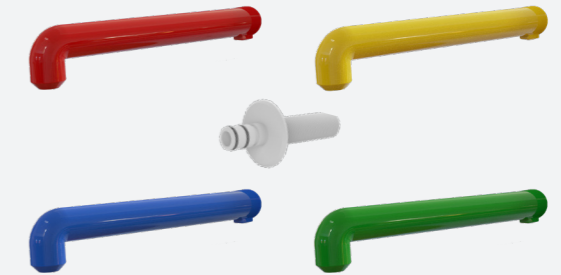
MEDI SPOUT™

The Medi Spout™ range has been designed to meet the high standard of hand wash hygiene demanded by hospitals. This range is perfectly suited for Healthcare and food sectors where hand hygiene is of the utmost importance.

Moulded in Anti-Microbial ABS with added Biomaster silver ion technology for long-term defence against harmful bacteria. Helping to prevent the growth of waterborne bio-films that can very easily spread.

FEATURES_

- Open outlet to reduce areas for biofilm growth
- Push-fit spigot and concealed grub screw for retention
- Can be operated using DVS sensors and Tap Control System (see pages 22-23)



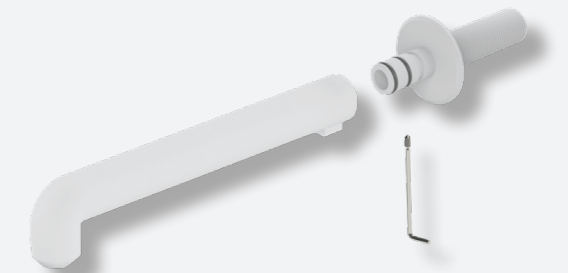
AT07-140



PUSH-FIT CONNECTION

The Push-Fit connection and secure mounting spigot ensures quick and easy replacement of all DVS Medi Spouts™ for efficient, disruption-free servicing and replacement.

Once the spout body is pushed on to the spigot, a concealed grub screw is fitted for security.



AT07-105

COLOURED SPOUTS

- The Medi Spout™ range is available in 4 different colours to promote a quarterly replacement regime
- Each colour represents one 3 month period in a year
- 1 year service pack, includes all 4 colours



FEATURING
**ANTI-MICROBIAL
SILVER ION
TECHNOLOGY**

dartvalley.co.uk | +44 (0) 1803 529021

AQUARIUS™ RANGE CLINICAL TAPS



AQUARIUS™ CLINICAL TAPS

Combining the benefits of hygienic no-touch technology with great water saving potential and robust, reliable performance, no-touch taps are well suited for a variety of healthcare applications including; hospital washrooms, operating theatres and more.

The two most important aspects of improving hand hygiene is to increase the frequency and improve the effectiveness of hand washing. DVS no-touch taps will help achieve both of these objectives.

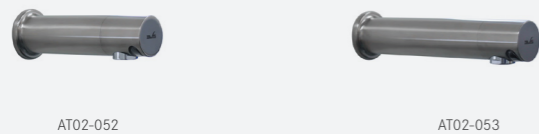
All DVS no-touch taps feature intelligent electronics enabling a range of adjustable settings, including; sensor detection range, run times and more.

Easy to install, with options for mains or battery operation, no-touch taps allow the user to control water efficiently, conserve energy and reduce costs without sacrificing performance and reliability.



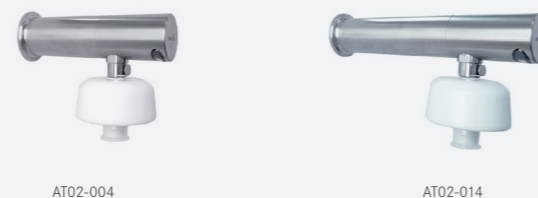
AQUARIUS™ WM STRAIGHT

- Available in 3 lengths 150mm, 200mm, 250mm
- Hygienic no-touch operation
- Adjustable settings include; run-time, sensor, range, lockout, anti-vandal, automatic purge and more.
- Robust 316 Stainless Steel
- Easy installation and servicing
- Ergonomic, easy clean services
- Range of finishes and tail options



AQUARIUS™ WM STRAIGHT W/ FILTER

- Available in 3 lengths 150mm, 200mm, 250mm
- Hygienic no-touch operation
- Adjustable settings include; run-time, sensor, range, lockout, anti-vandal, automatic purge and more.
- Robust 316 Stainless Steel
- Easy installation and servicing
- Ergonomic, easy clean services
- Range of finishes and tail options
- Quick connection / instant protection
- Validated to 0.2µm filter membrane
- Individually tested, pre-sterilised and ready to use



SURGEONS SCRUB-UP TROUGH RANGE

SCRUB UP TROUGH

Scrub-up troughs are an essential piece of hospital equipment to enable one or more surgeon or nurse to scrub their hands and forearms.

This range was specifically designed in accordance with the stringent HTM 64 guidelines and is also compliant with the new (HBN) 00-10, part C document.

The design requirements for the point of discharge in a scrub-up trough relative to the front rim is to ensure that water falls onto the inclined surface of the trough. They should also ensure that there is no water spillage outside of the trough and that there is sufficient activity space for users. Troughs should also be wall hung and fitted with a single waste outlet (left or right handed).

- Hygienic and vandal resistant design
- Concealed pipework
- Constructed from 1.5mm 316 Stainless Steel
- Available in 1, 2 or 3 station designs
- Specifically designed and developed for use with the DVS Aquarius™ straight taps
- Pre-drilled holes for tap mounting (optional)



**Taps not included*

FRANKE STAINLESS STEEL



CLEANERS SINK SIRIUS

Floor standing janitorial unit manufactured from grade 1.4301 (304) stainless steel, 1.2mm material thickness throughout except for lower bowl which is 0.9mm.

The janitorial unit can be fixed with 4 legs for floor standing or part wall hung/floor standing by using only two of the front legs or alternatively can be fitted as a wall hung unit by using the joggle strip provided.

- 38mm Waste outlet (bottom bowl)
- Monobloc mixer
- 32mm Flush grated waste outlet (top bowl)



G20050N

SLOP HOPPER

A DUHS hospital disposal unit manufactured from 1.2mm thick, 304 stainless steel with a satin polish finish.

The unit can be mounted on either stainless steel cantilever brackets or Front leg supports and has adjustable feet which can be screwed to the floor for extra stability.

- Ø110mm Hopper on right hand side
- Wet recess area
- 38mm Waste outlet in wash bowl
- 900mm Working height
- HTM64 compliant
- Available with the drainer on both the left and right side



G22018L

PRE-PLUMBED PANELS

PRE-PLUMBED PANELS

DVS offer an extensive range of washroom pre-plumbed panels and standard boxed out panels for most applications or can be manufactured to order.

- Robust, 16 gauge self supporting steel frame
- Adjustable for height, plumb and level
- Steel wall and floor fixing channels
- Abuse resistant sanitised antibacterial compact grade laminate panels
- AccessPlus™ pivoting and lockable access panels
- Post formed compact grade laminate vertical panelling
- Suitable for heavy use and wet environments
- Various colour options are available with lift off or hinged panels, and can also be supplied with locks or security screws.



Boxed out module

Aperture module



Between walls module



Between walls WC flush module

NO-TOUCH WC FLUSHVALVE

DVS have been manufacturing the WC flushvalve in the UK for over 30 years it is the choice for all high usage toilets with its proven reliability and water saving benefits.

The flushvalve can be set to flush automatically or by wave operation greatly reducing the high risk of cross contamination. Both auto and wave options have dual flush capability although DVS recommend a single 4 litre flush is best.

The DVS flushvalve has been designed to be compatible with most WC cisterns on the market today with no requirement to change the existing plumbing and can be retrofit to existing installations.

Various power options are available mains or battery there is also the option for mains with battery backup.

The flushvalve is compatible with the DVS hand held programmer making it easy to set up and adjust, it can be set to suit every environment, it's also WRAS approved.



WRAS approved
4 litre single flush



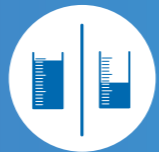
Hygienic no-touch
operation



Adjustable settings for
optimum flush, purge,
lock-outs and more



Typical 30% savings
on water costs



Dual Flush
and Auto modes



DVS branded products
are guaranteed for
5 years

WC FLUSHING SYSTEM



A recent survey has shown that the most contaminated part of a washroom is the WC flush handle. By utilising DVS's WC No-Touch flushing system, there are no flush handles required. This then significantly reduces the risk of cross-infection in the most contaminated area of the washroom.

The easy to use no-touch WC flushing system is triggered by an electronic infrared sensor which is activated when the user's hand comes within the set sensor range.

WC Flushvalves are fitted in a wide variety of commercial and public buildings, and have proven to be a tried and tested solution, unchallenged in performance and reliability, offering a robust vandal proof solution.

FEATURES_

- WRAS approved 4 litre single flush
- Average 30% savings on water costs
- Hygienic No-Touch operation (other options available)
- Adjustable settings for optimum flush, lock-outs, purge facility and more
- Easy to maintain



WC01-022

Healthcare Solutions

WC CISTERN KITS



TALL CISTERN

Concealed tall plastic cisterns, 6L volume, with secure fitting lid, available as stand alone or complete kit. Easy to install and comes in standard 1½" or 2" versions.

The tall cistern is ideal for where confined or limited space is available.



WC02-004

KIT_

- WRAS approved side entry filling valve
- Optional BREEAM delayed action side entry valve also available
- 1½" or 2" options available
- Kit contents; cistern, inlet valve, flushpipe and fitting for back of pan



WC02-014

STANDARD CISTERN

Concealed standard plastic cisterns, 6L volume, with secure fitting lid, available as stand alone or complete kit. Easy to install and comes in standard 1½" or 2" versions.



WC02-002

KIT_

- WRAS approved side entry filling valve
- Optional BREEAM delayed action side entry valve also available
- 1½" or 2" options available
- Kit contents; cistern, inlet valve, flushpipe and fitting for back of pan



WC02-012

AVAILABLE IN A RANGE OF SIZES AND FEATURING INDUSTRY STANDARD FITTINGS, DVS CISTERN KITS CATER FOR VARIOUS APPLICATIONS.

STAINLESS STEEL SHOWER TOWERS

SHOWER TOWERS



DVS SHOWERS

A wide range of sensors, control systems, shower heads and showers combine to create water efficient showering for a wide range of environments, from anti-ligature products to robust showers designed for heavy traffic areas.

Average savings of up to 50% can be achieved using DVS showers.

Major client sectors include NHS Estates, HMP Estates, Education and Local Authorities.

SHOWER TOWERS

DVS shower towers have a choice of either programmable / wave-on sensor, tactile switch or push button (self-closing) operation, offering energy efficiency and water saving benefits.

Electronic operation controls are supplied with pre-set settings but can be customised quickly and easily.

The towers are supplied pre-plumbed with valves safely housed within the tower casing.

FEATURES_

- Designed for high security applications
- Robust 1.5mm 316 Stainless Steel construction
- Wave-on, tactile or push button operation
- Available sloped top or ceiling height with or without TMV

Also available in white powdercoat finish



DVS SHOWER PANEL

DVS SHOWER PANEL



Utilising a minimal design, the DVS Shower Panel can be installed in a short space of time.

The shower panel is quick and easy to mount to the wall, removal / service access is greatly improved by a bracket mounting system.

The DVS Shower Panel is designed for use in Commercial / Leisure / Low risk applications, including high usage environments such as Educational facilities.

Low price banding makes the DVS shower panel great value.

SINGLE PIECE SHOWER PANEL



FEATURES_

- Low Cost
- Designed to fit flush against the wall & ceiling
- Single piece outer case construction
- Operated via Programmable sensor
- Robust 1.5mm Stainless Steel construction
- Can be operated via mains or battery power supplies
- Made from 304 Stainless Steel
- Can be used with external TMV
- 2 Bracket system

SH01-020



SHOWER PANEL WITH SHROUD



FEATURES_

- Low Cost
- Shroud features 20mm of adjustment to suit varied ceiling heights
- Designed to fit flush against wall & ceiling
- Single piece outer case construction
- Operated via Programmable sensor
- Robust 1.5mm Stainless Steel construction
- Can be operated via mains or 6v battery power supplies
- Made from 304 Stainless Steel
- Can be used with external TMV
- 3 Bracket system

SH01-019



DUAL OUTLET SHOWER

DUAL OUTLET SHOWER

Featuring a dual outlet, this means that assisted and unassisted showering can be achieved, making it well suited to high security healthcare applications.

Switching between outlets is quick and easy due to the inbuilt automatic diverter valve.

Assisted Mode;

Attach the 2m hose and handset to the bottom quick release outlet, the inbuilt diverter valve will switch over automatically.

Unassisted Mode;

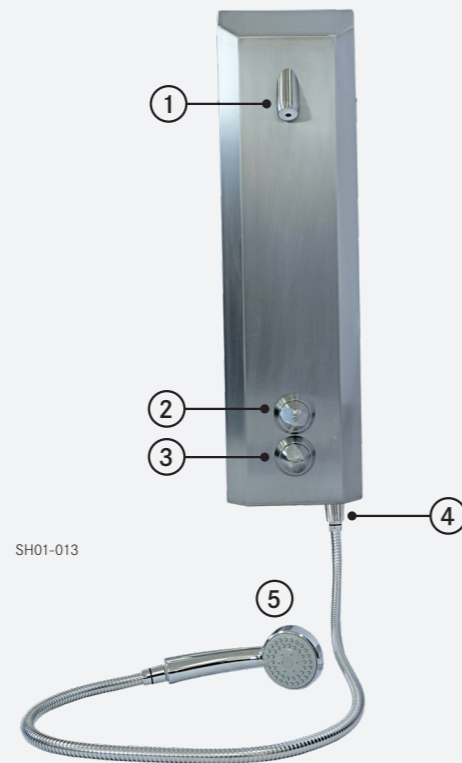
Utilising the fixed Anti-Ligature shower head, disconnect the 2m hose and operate via manual control knobs.

FEATURES_

- Designed for high-security healthcare applications
- Tamper proof
- Ligature resistant controls
- High impact resistance
- Robust 1.5mm (Front) and 2mm (Back) 316 Stainless Steel Construction
- Pre-plumbed rigid copper pipework

Also available in white powdercoat finish

To view the full range DVS showers, visit;
www.dartvalley.co.uk



KEY

- 1 Anti-ligature S/S shower head
- 2 ON/OFF and flow control
- 3 Temperature control
- 4 Dual/secondary outlet
- 5 Detachable head and hose

SHOWER TOWER WITH RAIL & HOSE

SHOWER WITH RAIL & HOSE



HEAD, RAIL & HOSE KIT

The ceiling height shower tower is also available with a complete shower head, rail and hose kit, which can be operated via Dart Valley's Standard wave-on sensor and Programmable sensor.

The shower head, rail and hose kit (without shower tower) is also available separately,

For existing direct pipework installations.

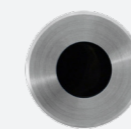
FEATURES_

- Easy shower head height adjustment
- Head, rail and hose chrome plated finish
- Robust 1.5mm 316 Stainless Steel construction
- Wave-on, tactile or push button operation
- Available sloped top or ceiling height with or without TMV

WAVE ON SENSOR

FEATURES_

- Hygienic No-Touch operation
- Polished 50mm chrome bezel
- High performance and reliability



PROGRAMMABLE SENSOR FOR SH01-011



SH00-025

SH01-011

STAINLESS STEEL

Stainless steel has a proven record of success in areas such as catering facilities where sanitation and ease of cleaning are so important. Stainless steels hygienic properties, corrosion resistance, strength and formability are important benefits to users in this sector. Its characteristics of having no pores or cracks to harbour dirt, grime or bacteria are another reason why stainless steel meets all the criteria.

The material is robust, easy to maintain and therefore very durable which makes the products economical over the lifetime of the building.

- Resistant to moisture
- Scratches and grooves lose their sharp edges quickly and blend into the surface
- Lasts for the lifetime of the building
- 100% recyclable



WM & DM SPOUTS

DVS offer a range of wall and deck mounted options, suitable for various applications including high security.

The DVS range of deck and wall mount spouts can be controlled via the standard tap control box, using infra-red or tactile sensors or the fully programmable sensor, offering either option allows customisable settings (for further information see pages (22-23)).

Simply contact the DVS technical sales team to discuss your specific application, to ensure that you obtain the optimum control solution.

All below WM & DM Taps below are designed to replace standard taps.

TAP SPOUTS (NO ELECTRONICS)

Available in 30° and 45° versions

FEATURES_

- 316 Stainless Steel (Brushed finish)
- Ligature resistant design
- Standard 5LPM outlet (other options available)
- Easy to clean shape



High security 30° tap spout S/S brushed AT07-041



High security 45° tap spout S/S brushed AT07-040

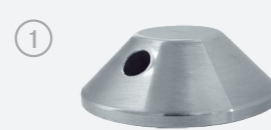
HIGH SECURITY DM SPOUTS

FEATURES_

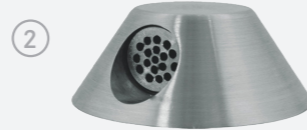
- 316 Stainless Steel (Brushed finish)
- Ligature resistant design
- Removable outlet (Requires DVS removal key)
- Suitable for various applications
- Anti-vandal design
- Easy to clean shape

SPOUT ANGLES_

1. 45°
2. Parallel to basin
3. Parallel to basin
4. 20°



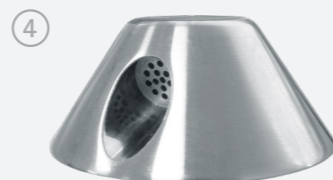
Deck mounted basin nozzle AT07-054
3/8" BSP



Deck mounted bath spout AT07-059
3/4" BSP



Deck mounted basin spout AT07-056
1/2" BSP



Angled deck mounted basin spout AT07-092
1/2" BSP

STAINLESS STEEL & ABS SHOWERHEADS

DVS offer various high security showerhead solutions that are robust, attractive and easy to install. Ceiling Mounted (Stainless Steel Only) and Wall options are available, all fitted with the One-Piece Anti-Microbial outlet. All Anti-Microbial ABS products feature Biomaster silver ion technology.

Models can be used in conjunction with the Shower Control System. The below showerheads are intended for installations where everything except the showerhead and sensor are concealed behind a wall or shower panel. The One-Piece Anti-Microbial ABS outlet can be removed for regular servicing and replacement.

Strong, durable and ligature resistant, these showerheads are suitable for various applications including high security environments.

316 STAINLESS STEEL

FEATURES_

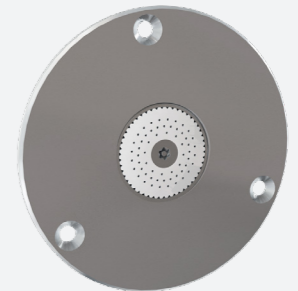
- 316 Stainless Steel (Brushed finish)
- One-Piece Anti-Microbial ABS outlet (Supplied with 4 different flow rates)
- Water efficient
- Tamper proof security screw
- Suitable for high security applications
- Ligature resistant design
- Easy to clean shape



Ceiling Mounted high security shower head SH07-046



Wall mounted 30° high security showerhead SH07-040



Flush mounted ceiling showerhead SH07-047

ONE PIECE ANTI-MICROBIAL OUTLET

FEATURES_

- Anti-Microbial Outlets promote a regular quarterly cleaning regime
- Reduced risk of cross contamination
- Other colours available

ANTI-MICROBIAL ABS

FEATURES_

- Anti-bacterial using Biomaster silver ion technology
- One-Piece Anti-Microbial ABS outlet (Supplied with 4 different flow rates)
- Low maintenance costs
- Reduced risk of infection
- Easy to clean / retrofit
- 5 year product warranty



Ceiling Mounted ABS high security shower head SH07-090



Wall mounted 30° ABS high security showerhead SH07-091

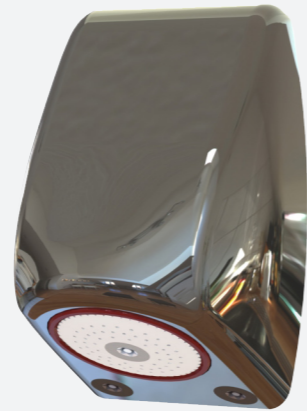
ANTI-MICROBIAL SHOWERHEAD

ANTI-MICROBIAL SHOWERHEAD

FEATURES_

- Removable brass front cover (Chromed finish)
- Brass backplate
- Removable fully Anti-Microbial outlet body
- One-Piece Anti-Microbial ABS outlet (Supplied with 4 different flow rates)
- Supplied with 4 coloured water ways

SH07-095



BREAKDOWN

1) Backplate_

- Strong, Sturdy Brass Backplate with 4 point fixing positions
- Easy push-fit connection to waterways

2) Waterways_

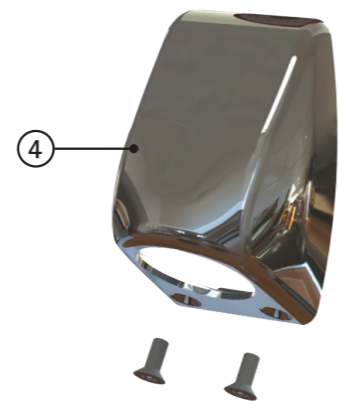
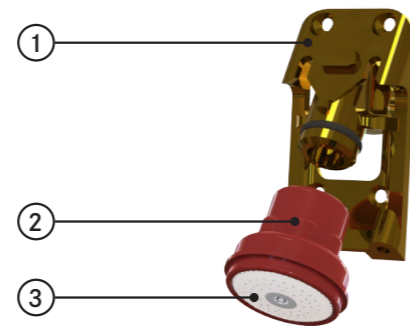
- Fully Anti-Microbial
- Supplied in 4 colours to promote a quarterly replacement regime

3) One-Piece Anti-Microbial Outlet_

- Fully Anti-Microbial
- Supplied in sets of 4 with 4 different flow rates

4) Outer Showerhead Cover_

- Chromed brass
- Easily removable for cleaning / waterways replacement



COLOURED WATERWAYS

- The Anti-Microbial Showerhead Waterways are available in 4 different colours to promote a quarterly replacement regime.
- Each colour represents one 3 month period in a year
- 1 year service pack, includes all 4 colours



RED 3020



BLUE 5002



GREEN 6010



YELLOW 1016

Healthcare Solutions

MEDI-SHOWER™

MediShower™ is an Anti-Microbial and water saving shower head and hose. Easy to maintain, hygienic and efficient, the MediShower™ is well suited to healthcare environments, where containing the spread of infection and meeting budgetary requirements are key priorities.

Using Biomaster technology - silver has been used in its pure form for many centuries to prevent growth of bacteria. Incredibly durable, long lasting and highly active, when Biomaster is added in to a product it is dispersed throughout the item, will not wash off and will last its entire active lifetime.

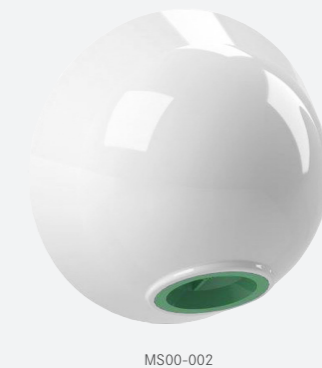
Biomaster has been proven to help reduce harmful bacteria's common in healthcare environments, including; Pseudomonas, Legionella, MRSA, E.Coli, Listeria, Salmonella and Campylobacter by up to 99.9%.

MediShower™ is also 100% designed and manufactured in the UK.

MEDI-SHOWER

FEATURES_

- Anti-bacterial using Biomaster silver ion technology
- Medi-shower replacement inserts promote a regular quarterly cleaning regime
- Low maintenance costs
- Reduced risk of infection
- Easy to clean / retrofit
- 5 year product warranty
- 5 year guarantee against limescale clogging



MS00-002



MS00-001



MEDI-FLUSH INSERTS_

- Colour coded system represents calendar quarters
- Quick and easy replacement using the MediShower™ key



MediShower™ key (one supplied)

dartvalley.co.uk | +44 (0) 1803 529021

CONTROL SYSTEMS

TAP CONTROL SYSTEM

The Tap Control System can be used to control mixed water for 1 or 2 taps, or to control both hot and cold on a single tap using 2 sensors. The control system can be used with the DVS wave-on or tactile sensors.

The system also features an in-built purge control option, which helps to avoid water stagnation.

When the user passes their hand past the sensor or pushes the tactile switch (depending on which is installed), the Control System activates the solenoid valve, which runs for a pre-set time before automatically closing and stopping the tap.

Various settings can be customised quickly and easily from within the control box if necessary.



AT07-001

URINAL CONTROL SYSTEM

The Urinal Control System controls flushing for single or double station urinals.

When the DVS sensor detects the user, a pre-flush option can be set to prevent splashing in the bowl, followed by a final flush when the user walks away, ensuring high levels of hygiene are maintained.

The control box enables adjustment of the flush timer, auto pre-flush and purge on/off facility.

- Single or double station flushing
- Significant water savings - save on average 65%



UC07-001

SHOWER CONTROL SYSTEM

The Shower Control System can be used for 1 or 2 shower stations. It will effectively give any standard showerhead automatic wave-on control.

The shower system also features a built-in purge control option to avoid water stagnation, adjustable run times and is also available in a battery operated version.

When the user passes their hand past the sensor or pushes the tactile switch (depending on which is installed), the Control System activates the solenoid valve, which runs for a pre-set time before automatically closing and stopping the tap.

Various settings can be customised quickly and easily from within the control box if necessary.



SH07-001

WASHROOM CONTROLS

MULTI-CHANNEL WASHROOM CONTROL SYSTEM



The DVS Multi-Channel Control System is suitable for controlling the following products via our Standard Sensor;

- WC Flushing
- No-Touch Taps
- Showers & Bath Controls
- Can be fully programmed using the DVS handheld programmer (see page 26)

The control box has been designed to meet the requirements for safe ensuite applications and the modern day washroom. We have also designed the control box to allow for simple installation with an easy access removable wiring platform, a fully hinged front cover allows full access to the sensor and valve plugs.



VR07-020

DVS POWER PACK

The DVS Power Pack is designed to provide power in the most demanding of environments, even those which are prone to power outages.

The system features an on-board Intelligent Charger keeps the battery at an optimum charge level.

In the event of a power out, the battery will continue to supply power for up to 10 days depending on load.

Compatible with the DVS range of taps, programmable sensors and Low Voltage Flushvalve Controls.

Can power up to 5 products in series from one unit

See programmable sensors on page 27 for compatible sensor options



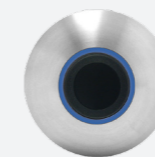
WC00-155

SENSORS / SWITCHES

Ligature resistant Wave-on Sensors or Tactile Switches with hot or cold indication inserts are available for controlling showers and taps, either as part of DVS Control Systems or for use with Shower Towers. (See page 27 for Programmable Sensors)



WAVE-ON SENSOR
50MM (HOT)
AC02-041



WAVE-ON SENSOR
50MM (COLD)
AC02-040



TACTILE SWITCH
50MM (HOT)
AC02-047



TACTILE SWITCH
50MM (COLD)
AC02-046

DVS THERMAL DISINFECTION VALVE



AQUA 3000 OPEN WATER MANAGEMENT SYSTEM

DVS THERMAL DISINFECTION VALVE (TDV)

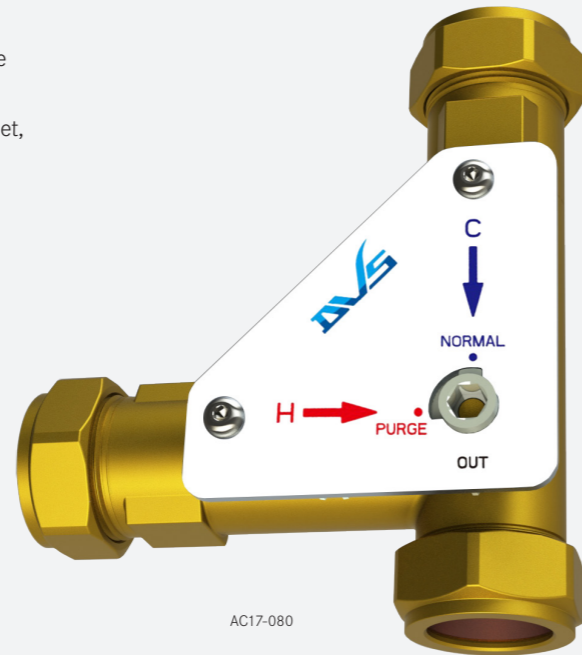
The DVS TDV valve has been designed to eliminate biofilm, reducing the risk of waterborne pathogens. This valve allows Thermal Disinfection from the TMV through to the outlet, (1x TDV valve required per TMV)

This valve is suitable for any washroom equipment fitted with a TMV which requires thermal disinfection, this includes;

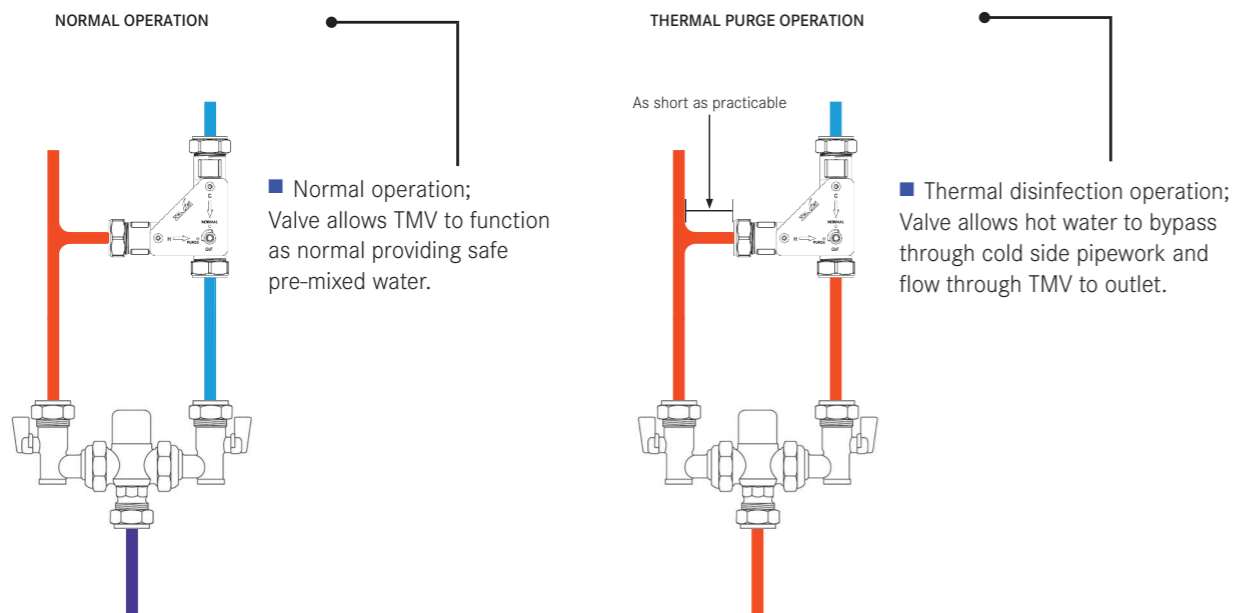
- Taps
- Shower Heads
- All other washroom equipment fitted with a TMV

FEATURES

- DZR brass body
- Simple, single quarter turn operation
- Suitable for 22mm & 15mm pipework
- Compliant with water regulations and by-laws
- Integral non-return valves prevent backflow



OPERATION SCHEMATIC (PRE TMV)



SUSTAINABLE

A flexible, expandable and thus future proof system that can be integrated into the computer aided facility management system.



ECONOMICAL

The efficient and demand-optimised use of resources (water, energy, time) makes the sanitary system a profitable investment.

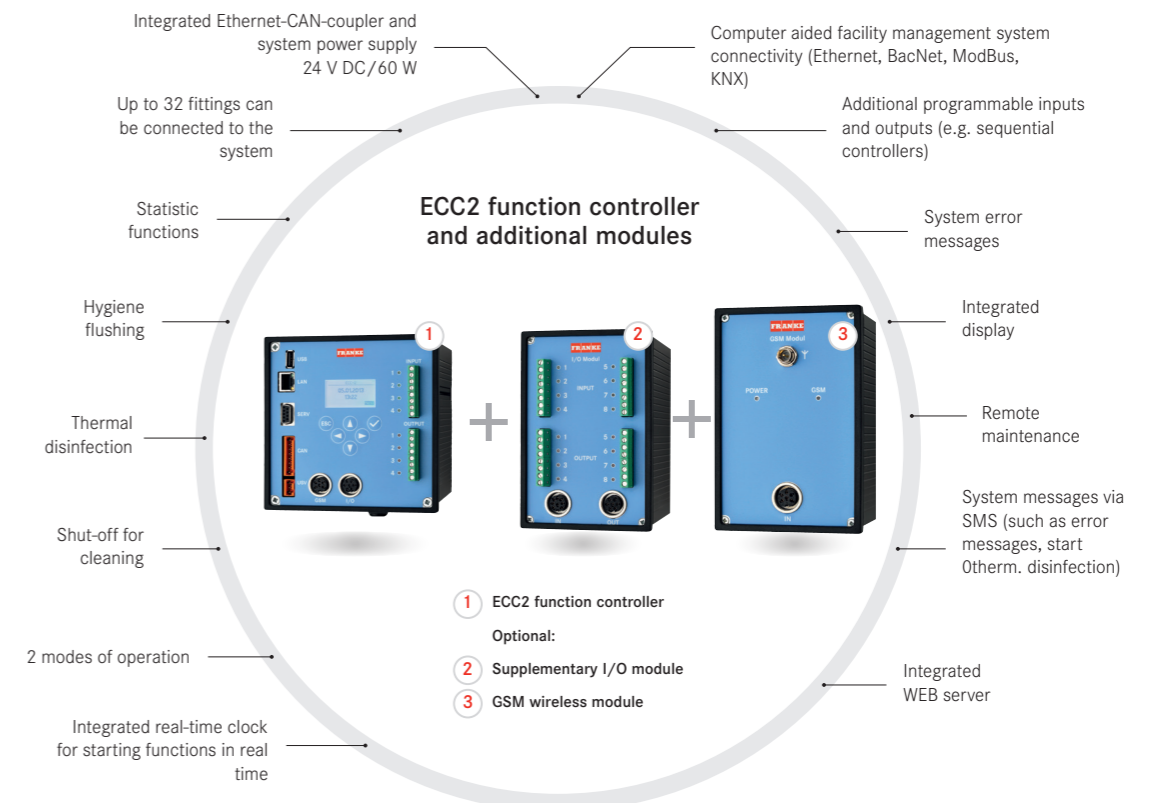


HYGIENIC

Regular hygiene flushing and thermal disinfection programs guarantee high quality drinking water.

The AQUA 3000 open water management system presents installers and operators with an easily installed, reliable, functional, hygienic and economical system which is even easier to integrate into host networks.

A sophisticated, complete water management system that facilitates economical operation of all connected components. The system can be individually programmed and expanded as required.



HANDHELD PROGRAMMER

The DVS handheld programmer has been developed to program the complete range of DVS washroom controls, constantly being upgraded to add more options and features.

The programmer is bi-directional meaning it can also read a sensor, allowing your service team or installer to view the settings before changing.

When reading a sensor it will also supply information such as how many operations, how many purges, run time and serial number etc.

To program a sensor or tap is simple, just point and press.

The programmer allows more flexibility for DVS products, for example, when setting a WC sensor you have the option of wave-on or fully automatic operation with dual flush all from the one sensor, in the past this required three different sensors.



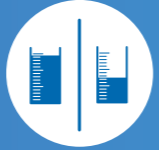
USB Connection for real time data upload and dynamic software updates



Data on operations, purges and more



Adjustable settings, including sensor range and flush time



Dual Flush and Auto modes



Compatible with a range of DVS products



PROGRAMMABLE SENSORS

PROGRAMMABLE SENSORS



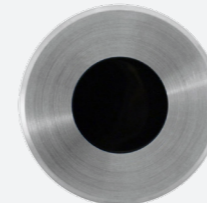
Programmable sensor settings can be quickly and easily adjusted using the DVS Handheld Programmer.

The DVS Handheld Programmer and Programmable Sensor combination allows settings on the following DVS products to be adjusted;

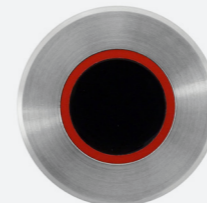
- Taps
- Urinals
- Showers
- Baths
- WC's

FEATURES_

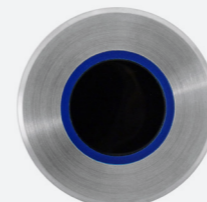
- Brushed 316 Stainless Steel 50mm bezel
- Available in Standard (no insert), Red insert & Blue insert versions



AC02-017



AC02-025



AC02-024

HANDHELD PROGRAMMER

The DVS Handheld Programmer allows quick and easy adjustment to many settings across the various options across the Programmable Sensor range.

The following list highlights a selection of settings that can be adjusted via the Handheld Programmer;

- Run Time
- Sensor Range
- Wave-On Only or Wave-On / Wave-Off
- Purge (Default OFF)
- Purge Run Time
- Lock Outs (on or off)
- Lock Out Operations
- Upgradable Software



AC01-001




The above icon is to represent a product being "Programmable"

Where this icon is seen, this means the product settings can be adjusted via the DVS Handheld Programmer.


PRODUCT LIST

For project support and bespoke product information, please contact us on +44 (0) 1803 529021 or alternatively, email us at sales@dartvalley.co.uk


 MT04-001 Aquaritherm™ Tap (Manual Version) Page 2	 AT04-001 Aquaritherm™ Tap (Automatic Version) Page 3	 AC06-002 Aquaritherm™ Service kit; filter cartridge, check valve and flow straightener Page 3	 AC06-001 Aquaritherm™ Service kit; thermostatic cartridge Page 3	 AT07-101 EZ-Spout™ healthcare 90° tap spout (includes spigot) Page 4	 AT07-103 EZ-Spout™ 60° tap spout (includes spigot) fitted with 5 LPM aerator Page 8
 AT07-104 EZ-Spout™ healthcare 60° tap spout (includes spigot) Page 4	 AT07-102 EZ-Spout™ 90° tap spout (includes spigot) fitted with 5 LPM aerator Page 4	 AT07-140 Medi-Spout™ 90° tap spout set (includes spigot) Open outlet Page 5	 AT07-105 Medi-Spout™ 90° tap spout (includes spigot) Open outlet (white version) Page 5	 AT02-011 Aquarius WM straight tap spout only in s/steel 200mm with PEX tails Page 6	 AT02-004 Aquarius WM straight tap spout only in s/steel 150mm with filter Page 6
 AC05-012 Single station surgeons scrub-up trough only (excludes taps) Page 7	 AC05-011 2 station surgeons scrub-up trough only (excludes taps) Page 7	 AC05-010 3 station surgeons scrub-up trough only (excludes taps) Page 7	 G20050N Janitorial unit cleaners sink sirius Page 8	 G22018L Janitorial unit slop hopper Page 8	 - Boxed out module with Aquaritherm tap Page 9
 - Aperture module with Medi-Spout 60 and WM programmable sensor Page 9	 - Between walls module with Aquaritherm tap Page 9	 - Between walls module with wall hung WC pan & wave-on sensor Page 9	 WC01-022 WC Flushvalve with in-built overflow 1 1/2" base Page 10	 WC02-004 Concealed tall plastic cistern (cistern only, 2") Page 11	 WC02-002 Concealed plastic cistern (cistern only, 2") Page 11
 WC02-012 Concealed plastic cistern kit (2" kit) Page 11	 WC02-014 Concealed tall plastic cistern kit (2" kit) Page 11				




WATER MANAGEMENT SOLUTIONS



SAFE ENSUITE SOLUTIONS




















FOOD HYGIENE SOLUTIONS



TAPS & SHOWERS

For more of our products, and to see what else DVS can offer, see our other catalogues.

 STANDARD HEIGHT Shower tower, please see page 12 for options and product codes Page 12	 CEILING HEIGHT Shower tower, please see page 12 for options and product codes Page 12	 CEILING HEIGHT Shower tower, please see page 12 for options and product codes Page 12	 SH01-020 DVS Shower Panel, single piece front cover, programmable operation Page 13	 SH01-019 DVS Shower Panel, front cover with shroud, programmable operation Page 13	 SH01-013 Dual Outlet shower with head and hose kit Page 14
 SH01-011 Shower tower (ceiling height) with head, rail and hose kit Page 15	 AT07-041 High security 30° tap spout, stainless steel, brushed Page 16	 AT07-040 High security 45° tap spout, stainless steel, brushed Page 16	 AT07-054 Deck mounted basin nozzle - 1/2" BSP Page 16	 AT07-059 Deck mounted bath spout - 1/2" BSP Page 16	 AT07-056 Deck mounted basin spout - 1/2" BSP Page 16
	 AT07-092 Angled deck mounted basin spout - 1/2" BSP Page 16	 SH07-046 Ceiling mounted high security shower head Page 17	 SH07-040 Wall mounted 30° high security shower head Page 17	 SH07-047 Flushed mounted ceiling shower head Page 17	 SH07-090 Wall mounted ABS high security shower head Page 17
 SH07-091 Wall mounted 30° ABS high security shower head Page 17	 SH00-060 One-Piece Anti-Microbial outlet (supplied in sets of 4) Page 19	 SH07-095 Anti-Microbial showerhead Page 18	 MS00-002 Medi-Shower™ Wall mounted ABS high security shower head Page 19	 MS00-001 Medi-Shower™ Wall mounted 30° ABS high security shower head Page 19	 SH07-075 Medi-Shower™ showerhead (outlet not included) Page 19

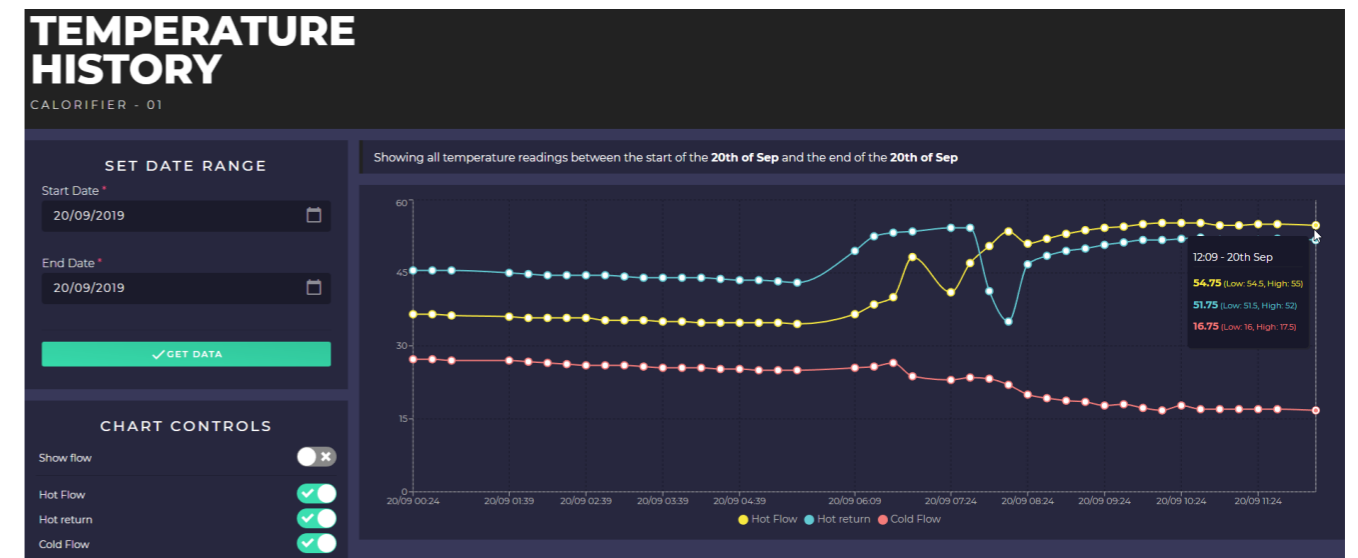
 AT07-001 Tap control system for 1 or 2 taps (Control box only) Page 20	 SH07-020 Bath control system for use with bath filling plate (Control box only) Page 20	 SH07-001 Shower control system for 1 or 2 showers (Control box only) Page 20	 VR07-020 Multi-Channel control system Page 21	 WC00-155 DVS Power Pack Page 21	 AC02-041 Wave-On Sensor 50mm (Hot) Page 21
 AC02-040 Wave-On Sensor 50mm (Cold) Page 21	 AC02-047 Tactile Switch 50mm (Hot) Page 21	 AC02-046 Tactile Switch 50mm (Cold) Page 21	 AC17-080 TDV for use with taps, shower heads and other tmv fitted washroom equipment Page 22	 ZA30P0011 ECC2 function controller Page 23	 ZA30P0012 Expansion module I/O Page 23
 ZA30P0013 GSM wireless module Page 23	 AC01-001 Handheld programmer (to adjust tap, urinal, shower, bath & wc settings) Page 24	 AC02-017 Wall-mounted brushed s/steel programmable tap sensor Page 25	 AC02-025 Wall-mounted brushed s/steel programmable tap sensor (red insert - hot) Page 25	 AC02-024 Wall-mounted brushed s/steel programmable tap sensor (blue insert - cold) Page 25	



WATER TEMPERATURE MONITORING

Benefits

- Real time temperature monitoring
- Risk based alert system
- Detection of flow events
- Map & manage complete water system
- Intuitive software
- Clear graphic display
- Upload schematics & asset specific documents
- Full & easy access to all data
- Manage statutory monitoring tasks
- Designed for desktop, tablet & mobile
- Integration with existing systems
- Ease of installation



TEMPERATURE MONITORING

DVS Neptune is a unique system developed to address the water risks associated with legionella and other bacteria in healthcare facilities and public buildings. The system is an efficient risk management tool, which continually monitors the temperature of a water system, profiling and providing superior risk management. The identification and management of assets is key to water safety.

For project support and bespoke product information including; tech spec sheets, instruction manuals, BIM models, brochures, full product range and more, please visit our website at:

www.dartvalley.co.uk

or alternatively, contact us:

T +44(0)1803 529021

E sales@dartvalley.co.uk

