

AQUA 3000 Open - Managing Water Efficiently

Mental Healthcare



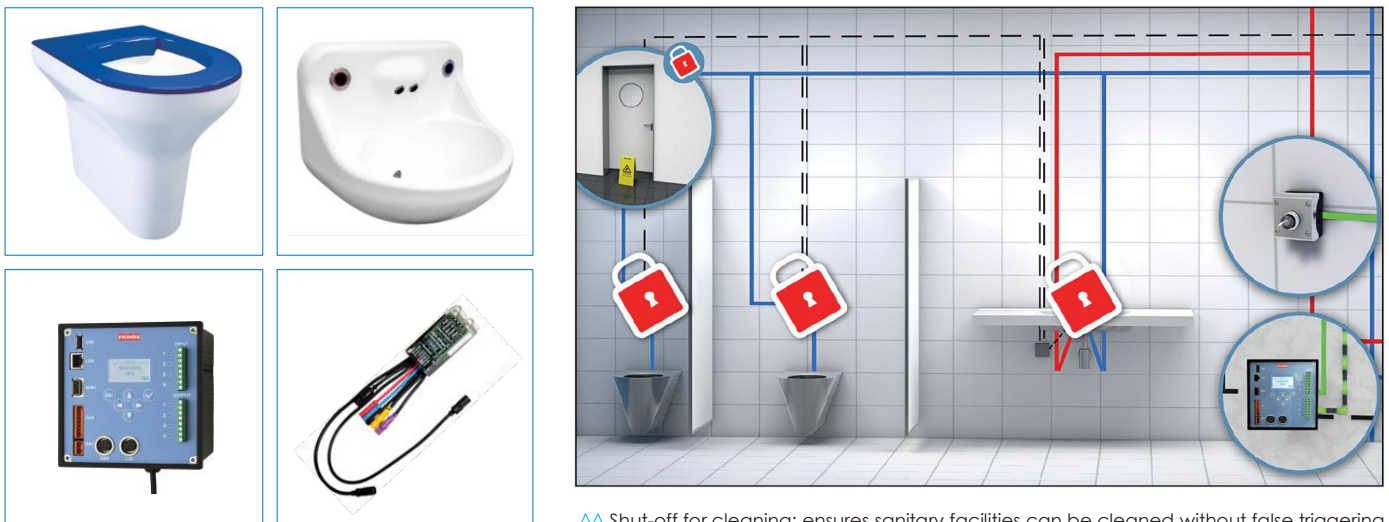
^^ Main Southmead Hospital building

Avon & Wiltshire Mental Health Partnership NHS Foundation have installed the AQUA 3000 Open system that will significantly help to improve both hygiene and water efficiency, through convenient central monitoring and control.

The New Horizons MBU at Southmead offers a specialist service for women suffering from postnatal mental illness. Within this facility the AQUA 3000 Open controls and monitors the Showers, Basins, WC's, Baths, Janitorial sinks, Kitchen sinks and Clinical sinks.

- AQUA 3000 Open Networking allows adjustments from a PC within or remote from the building to control and monitor fittings, e.g. showers, basins and clinical sinks
- Temperature sensors on hot and cold supplies – to provide statistics and help control Legionella etc.
- Monitoring and recording of temperature and usage statistics via BMS
- Monitoring of temperatures (hot & cold) at sentinel points
- Fixed hygiene purges to suit individual patient requirements - preventing unexpected purges e.g. at night time
- Staff controlled lockouts for individual Ensuites- controlled remotely
- Automatic lockout based on number of uses within an agreed period of time
- Thermal disinfection available for showers
- Temperature monitoring along with controlled and recorded automatic purges assist in the control of waterborne bacteria such as Legionella

Main Products Supplied:



^^ Shut-off for cleaning; ensures sanitary facilities can be cleaned without false triggering

For more information on our products and services, please contact the sales team on +44 (0)2890 461755

SYSTEM APPLICATIONS

RECREATION

Swimming pools,
fitness studios,
spas,
etc.



EDUCATION

schools,
nursery schools,
educational and
training
institutions, etc.



TRAVEL

airports,
railway stations,
campgrounds,
motorway
services,
etc.



HEALTH

hospitals,
nursing homes,
etc.



SECURITY

prisons,
police stations,
military
installations,
etc.



Because the requirements for efficiency, comfort and hygiene in the construction of building facilities are constantly growing, water management is becoming more and more important in this field. Just as is the case in the entire field of facility management. AQUA 3000 open stands for future-proof water management that can be easily expanded to accommodate the growing needs of a building. It is an open system that can be integrated into existing building management systems. Changes in the use of the building present no problem. Fittings can be easily added or removed even years after the initial construction.

Shower areas are increasingly the focal point of consideration with respect to possible sources of infection from drinking-water systems. Thermal disinfection methods have emerged as the recognised state of the art in technology for preventing such infection. In bus-networked fitting systems, hygiene requirements can be ideally complied with. The individual setting options are as varied as the conditions of the building itself. The water management system can learn from its users and adapt accordingly.

Specialists from Franke Water Systems supervise commissioning, provide appropriate training and are also available during regular operation at any time.

Examples of applications and system representations provide suggestions and impulse for detailed designs and sample installations of AQUA 3000 open.